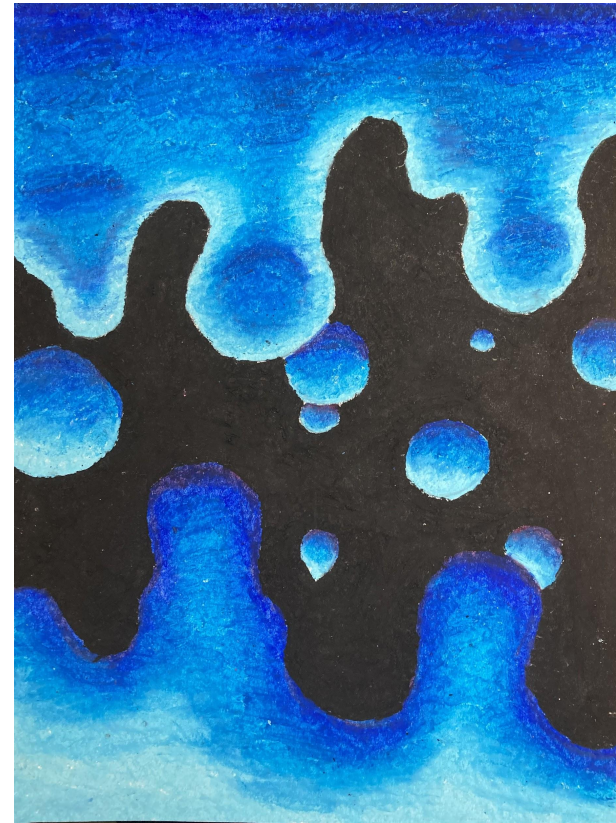


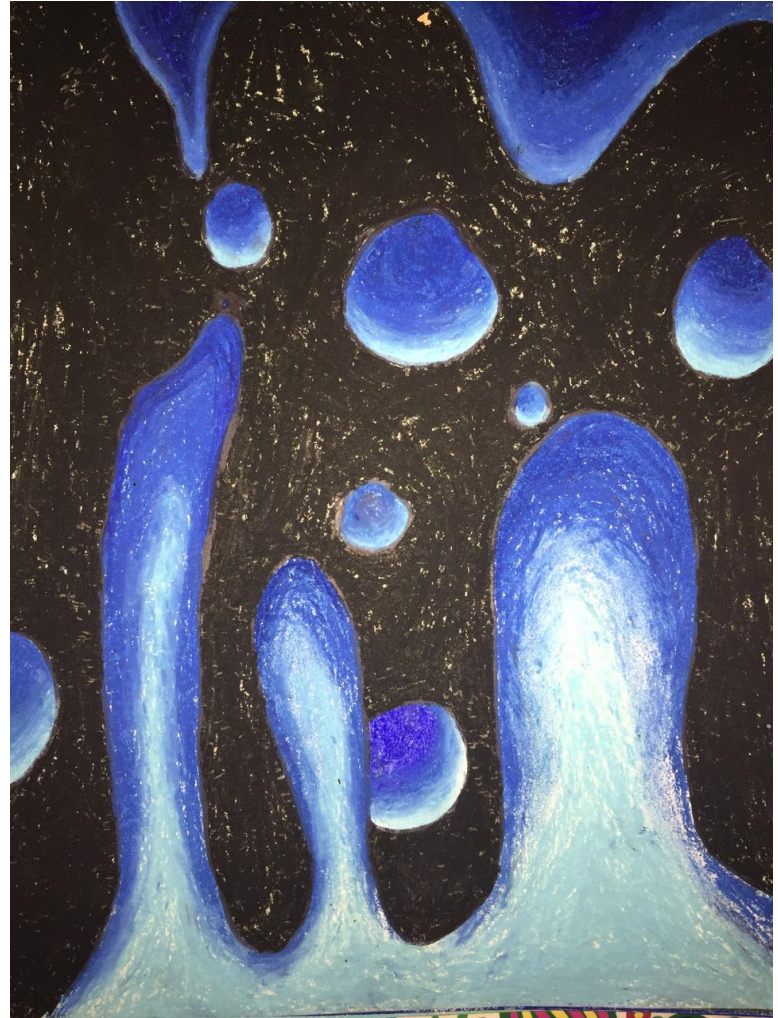
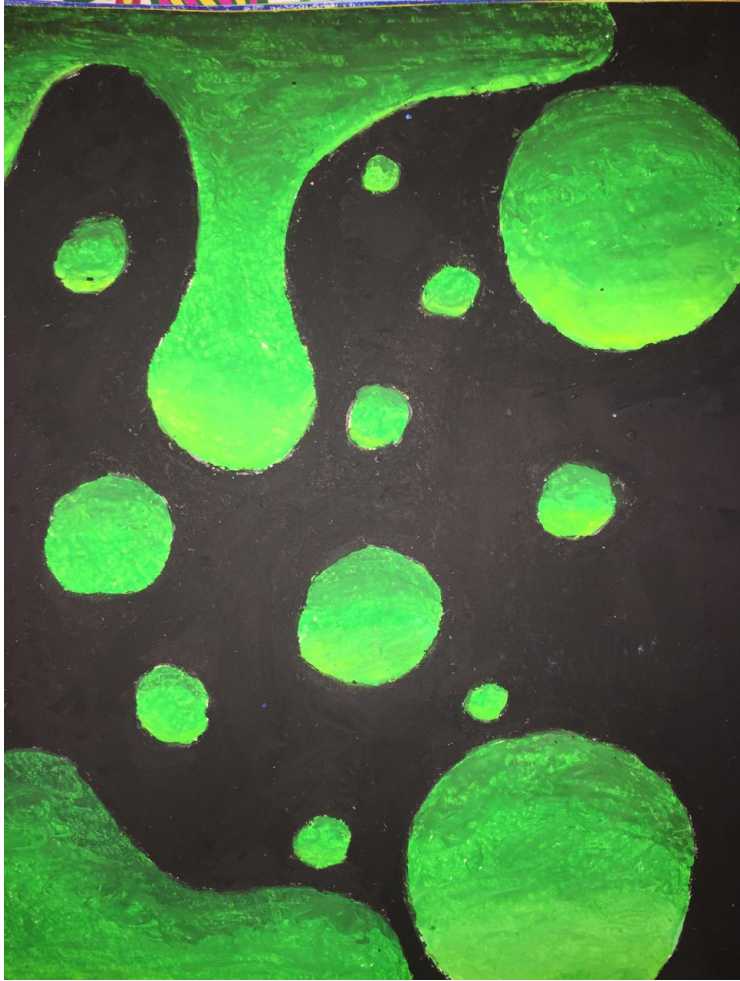
What do you notice about the light in a lava lamp?

The light comes from the bottom

The liquid is light on the bottom and gets darker as it moves up

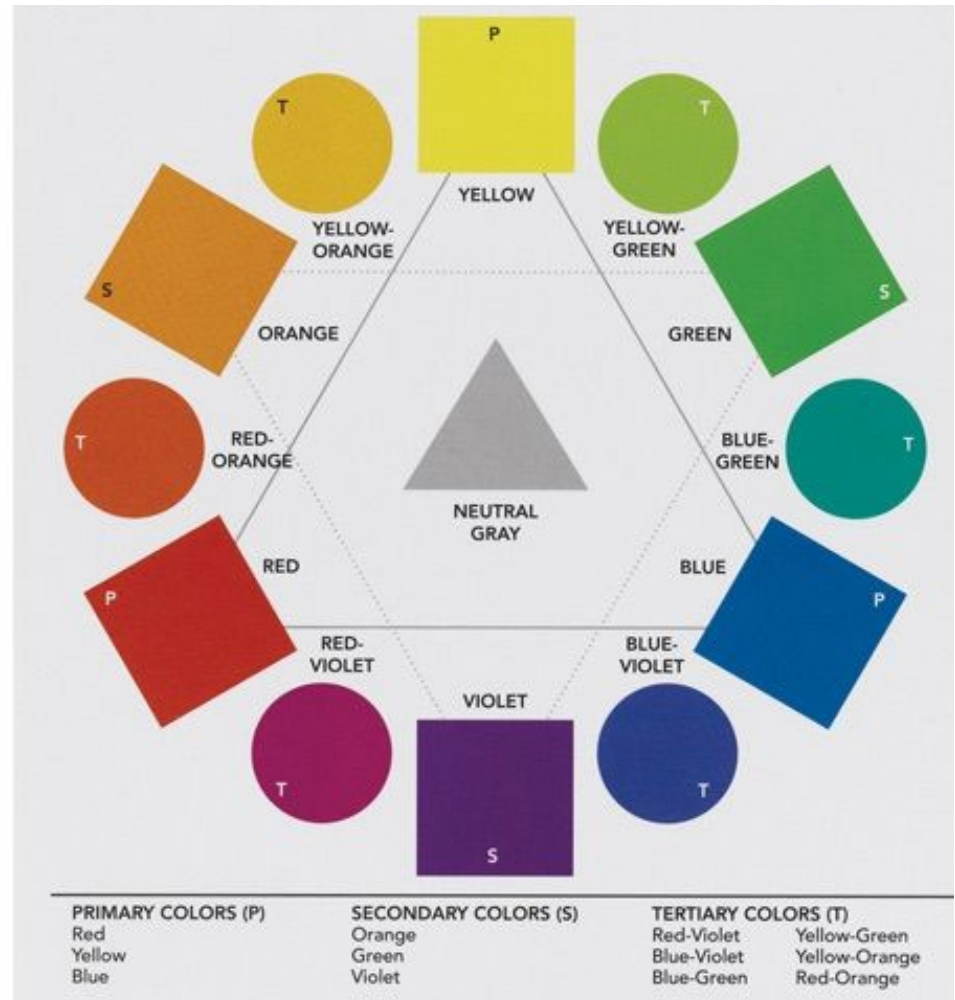
To familiarize ourselves with oil pastels and blending we will be creating a Lava Lamp drawing



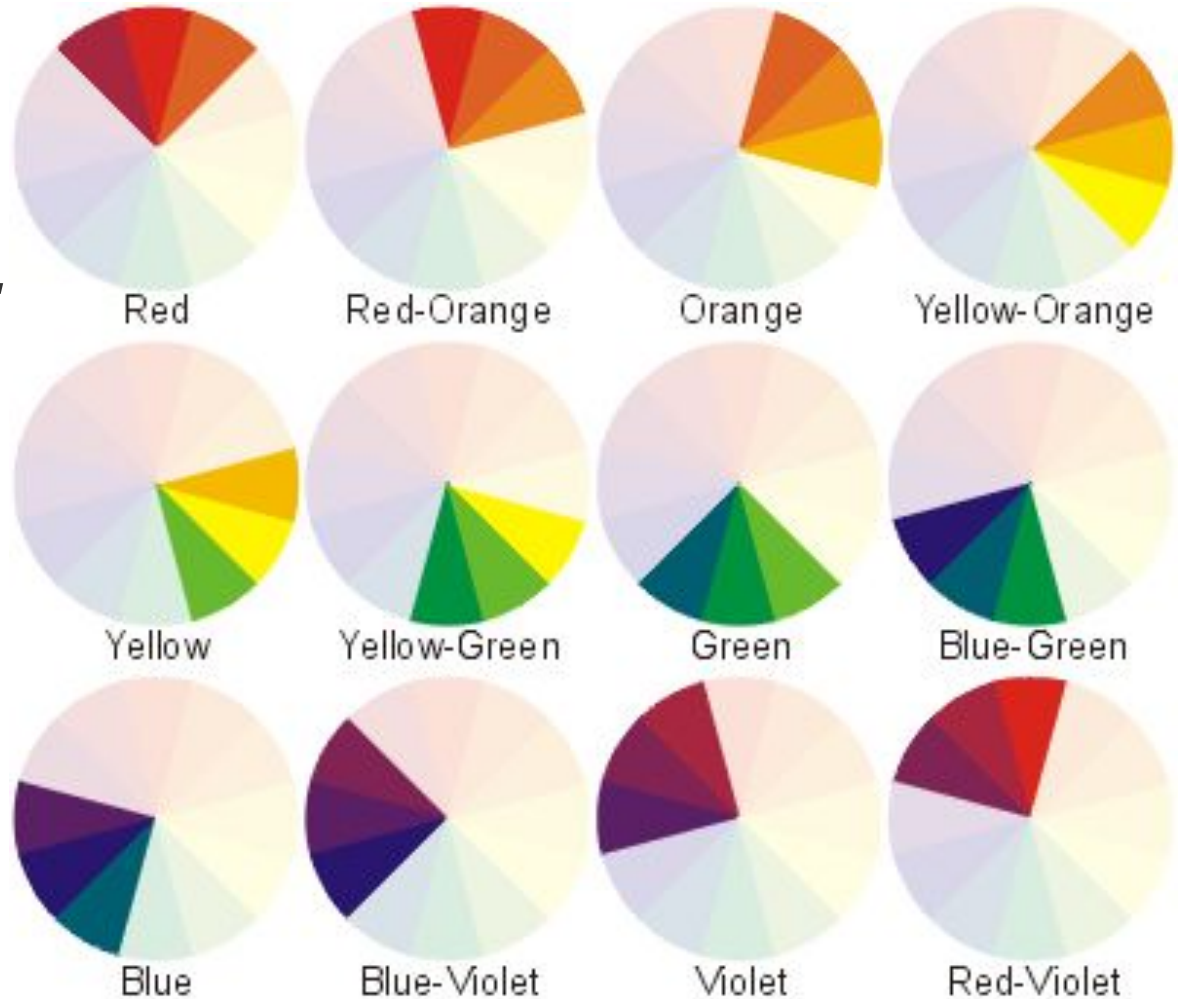


***You will use Analogous colors to create lights and darks.***

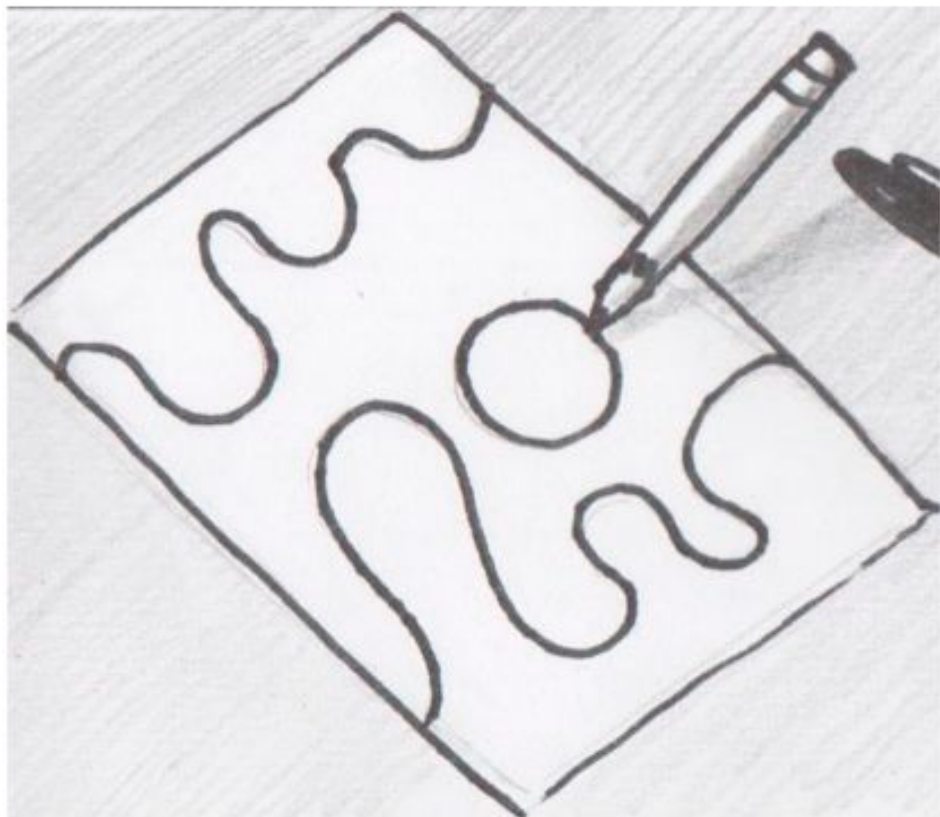
***Analogous colors are next to each other on the color wheel - in groups of 3***



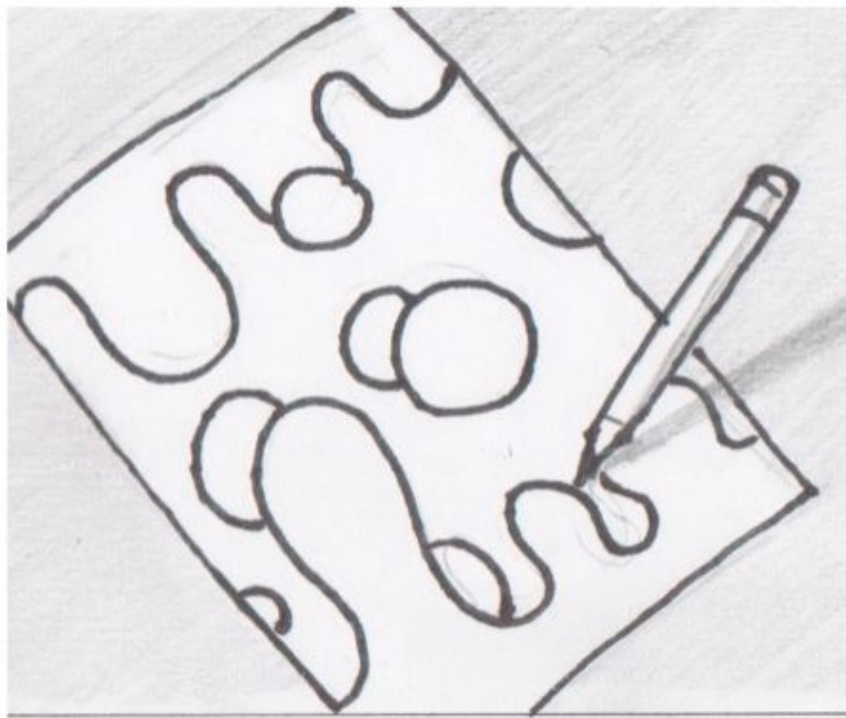
***Analogous colors  
are next to each  
other on the color  
wheel***



***You will be  
picking 3 colors  
to use on your  
lava lamp***



1- With a pencil draw a variety of bubbles and curves. Make some stretched out and some round.



2 – Overlay some of the bubbles to create depth and space. Then pick a color as your main color. The main color is the general color. It will be used throughout the whole picture.

**DO NOT USE,  
BLACK, BROWNS  
OR GRAYS!**

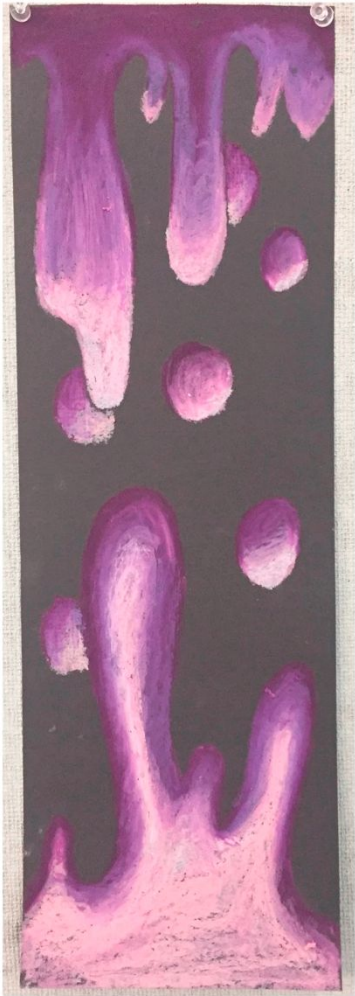
3- Your light source will be from the bottom

See my sample

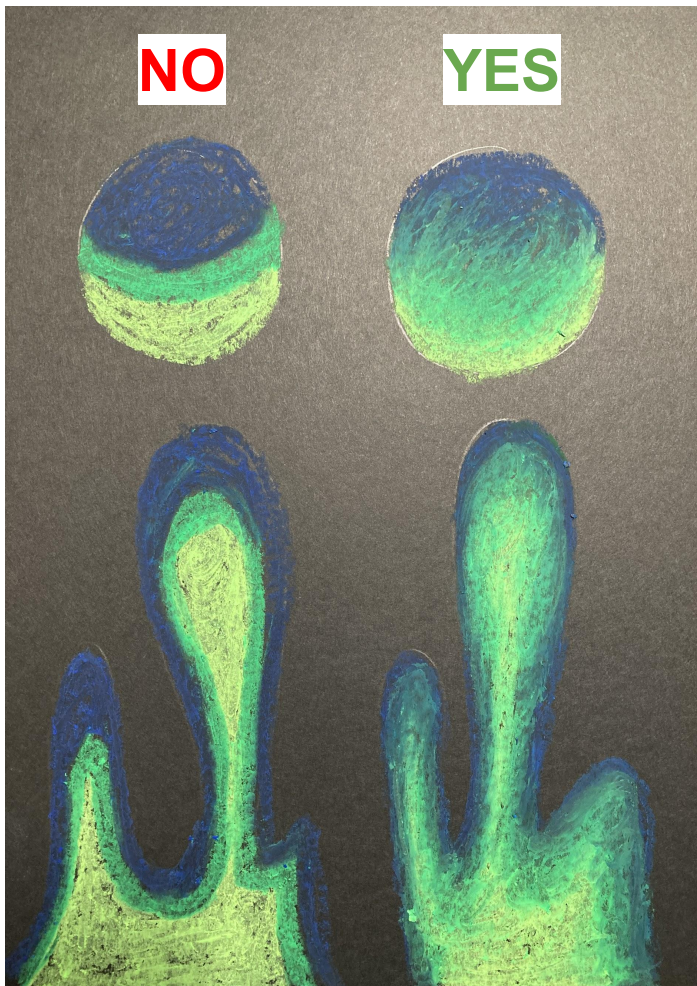


The blobs on the bottom of your paper will be light on the bottom moving up to darker

The blobs on the top part of your paper will be dark on top and light as they move down the paper







- Light is coming from the BOTTOM
- Use a variety of the same color in different shades and analogous colors if you need it.
- Layer oil pastels to blend
- Make sure you have some bubbles that overlap each other
- Coloring in a circular motion covers the paper better
- Don't press too hard, layer!
- **DO NOT USE YOUR FINGERS** to Blend
- Put scrap paper under your hand to stop smudging